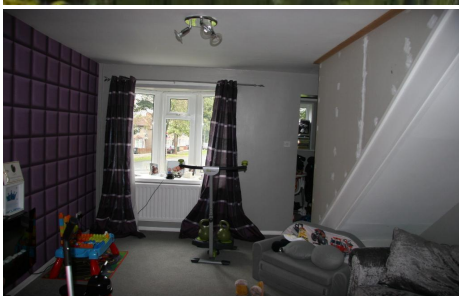


## 2 Bedroom End Terraced for Sale - £75,000

The Sycamores, Guidepost, NE62 5LW



### KEY FEATURES

- 2 BEDROOMS • END TERRACED HOUSE • GCH • DOUBLE GLAZED • GARDEN • EPC RATING - D • NO ONWARD CHAIN • \*\*NEW PICTURES TO FOLLOW\*\*

## Description

We offer for sale a 2 bedroom, end terraced house, situated on The Sycamores, Guidepost with no onward chain.

Comprising -

Entrance door into porch area with open plan living room with bow window and open staircase.

Kitchen with a range of floor and wall units, boiler, storage cupboard and access to the rear and side, enclosed garden.

To the 1st floor there are 2 bedrooms and a family bathroom with white suite and an over bath shower.

**\*\*NEW PICTURES TO FOLLOW\*\***

## Location

Guidepost is a village in South East Northumberland, about 17 miles north of Newcastle upon Tyne. It lies south of the River Wansbeck.

It is a mainly residential village. There is one pub, Shakespeare Tavern, and a Social Club. It has several shops and two schools; Cleaswell Hill School, Mowbray Primary school and Ringway Primary School

Good road and bus links into Ashington, Morpeth, Newcastle, A1.

## Energy Efficiency Rating

Score	Energy rating	Current	Potential
92+	A		
81-91	B		84   B
69-80	C		
55-68	D	56   D	
39-54	E		
21-38	F		
1-20	G		