

4 Bedroom Detached for Sale - £222,000

Sherbourne Villas, Stakeford Lane, Choppington, NE62 5QA



KEY FEATURES

- 4 BEDROOM • DETACHED HOUSE • SPACIOUS FAMILY HOME • DETACHED GARAGE • GARDEN • CONSERVATORY • SOLAR PANELS • EPC RATING - B • VACANT POSSESSION • CURRENTLY BEING CLEARED

Description

We are proud to offer to the market for sale this lovely, four bedroom detached, family home on a private plot on Sherbourne Villas in Stakeford.

Benefitting from a downstairs cloaks/wc, living room with bay window and feature fireplace, a kitchen/diner with a good range of units and patio doors into a delightful conservatory, separate utility room.

Four generous sized double bedrooms, with the fourth bedroom on the second floor, Light and airy with 2 velux style windows creating an ideal guest/ teenager bedroom, family bathroom, en-suite shower room.

Externally there is a detached garage, with driveway, creating off street parking, enclosed rear garden.

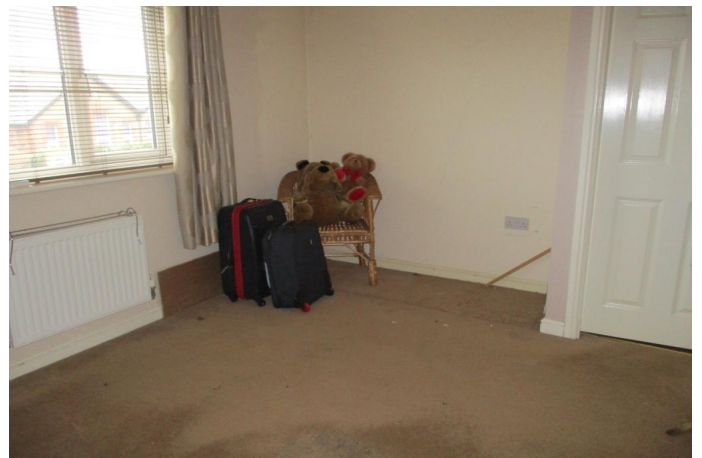
Solar panels fitted to the roof.

The property is situated on a small and modern development, and ideally located to all amenities and with good transport links.

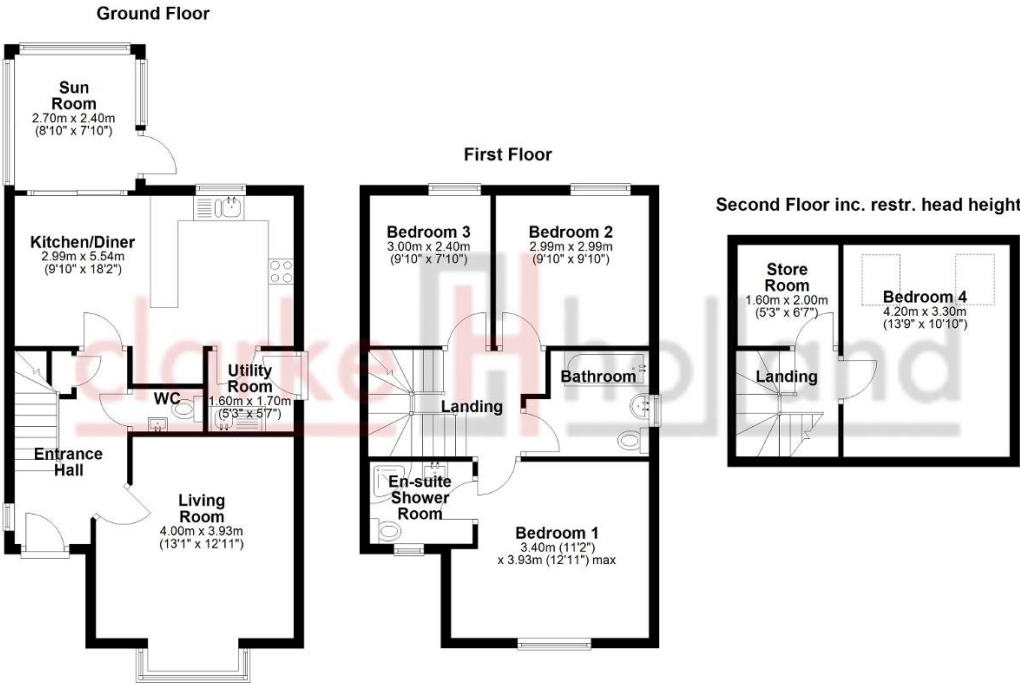
Vacant possession.

Property is currently in the process of being cleared









Floor plan is approximate and is provided for visual reference only.
Plan produced using PlanUp.

Sherbourne Villas

Energy Efficiency Rating			
Score	Energy rating	Current	Potential
92+	A		
81-91	B	84 B	85 B
69-80	C		
55-68	D		
39-54	E		
21-38	F		
1-20	G		