

2 Bedroom Flat for Sale - **£57,500**

Victoria Terrace, Bedlington, NE22 5QD

Awaiting Image

### KEY FEATURES

- 2 BEDROOMS • GROUND FLOOR FLAT • GCH • DOUBLE GLAZED • EPC RATING - C • SITTING TENANT • INVESTMENT OPPORTUNITY

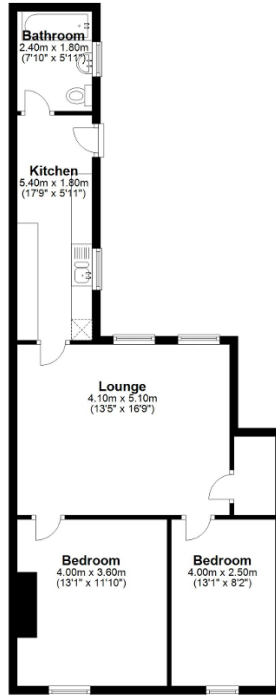
## Description

We offer for sale a 2 bedroom, ground floor flat situated on Victoria Terrace in Bedlington. The property has a long term tenant insitu and is to be sold tenanted. Tenant is currently paying £350pcm.

**\*\*INVESTMENT OPPORTUNITY\*\***

**Ground Floor**

Approx. 62.8 sq. metres (676.0 sq. feet)



Total area: approx. 62.8 sq. metres (676.0 sq. feet)

Floor plan is approximate and is provided for visual reference only.  
Plan produced using PlanUp.

**Victoria Terrace**

Energy Efficiency

Energy Efficiency Rating			
Score	Energy rating	Current	Potential
92+	A		
81-91	B		
69-80	C	74   C	77   C
55-68	D		
39-54	E		
21-38	F		
1-20	G		