

## 2 Bedroom Bungalow for Sale - Offers in Excess of £170,000

Ringway, Choppington, NE62 5XT



### KEY FEATURES

- 2 DOUBLE BEDROOMS • LINK DETACHED • OFF STREET PARKING • GARDEN • OPEN PLAN LIVING • EPC RATING - D • COUNCIL TAX BAND B

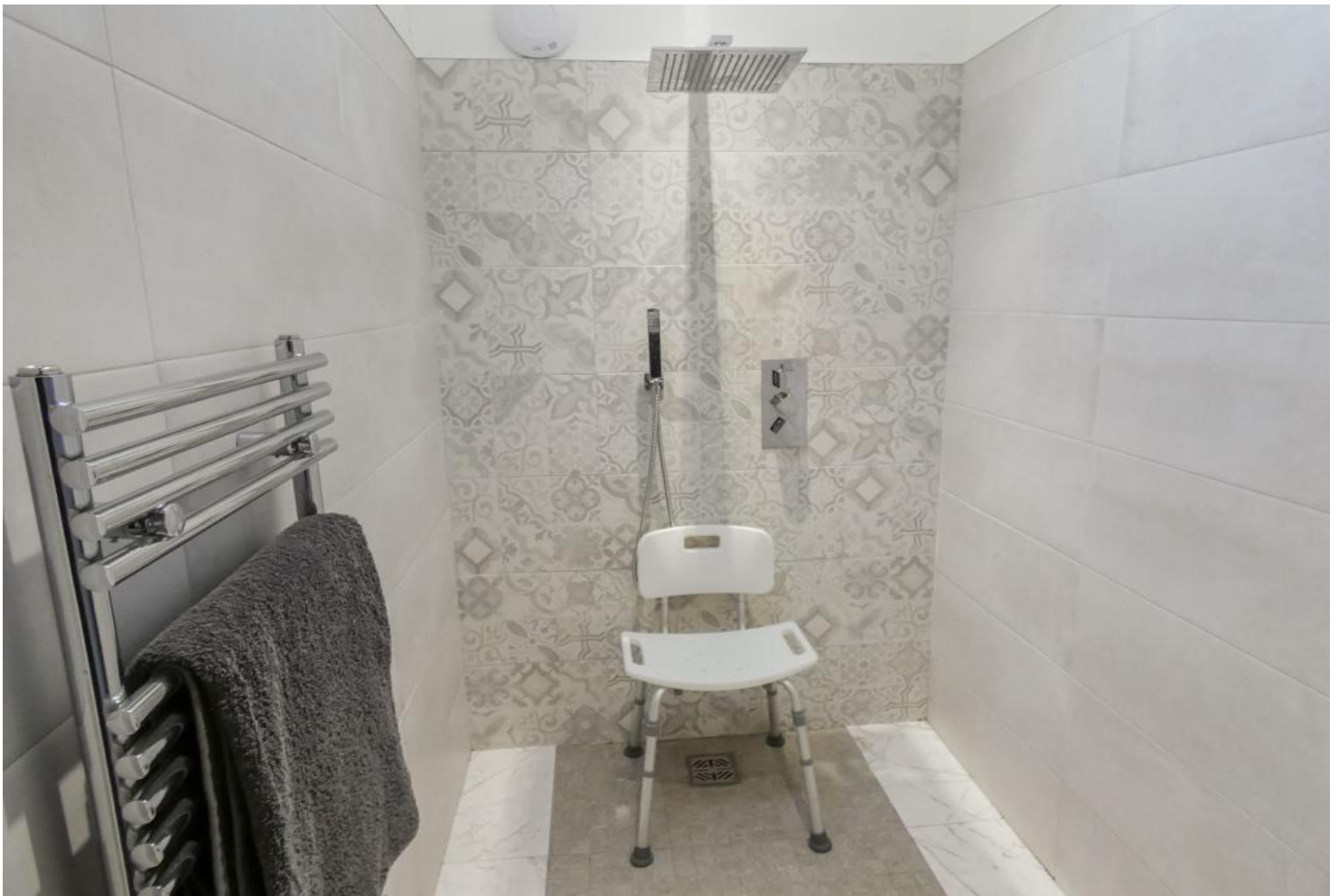
## Description

We welcome for sale this 2, double bedroom, link detached bungalow on Ringway in Stakeford.

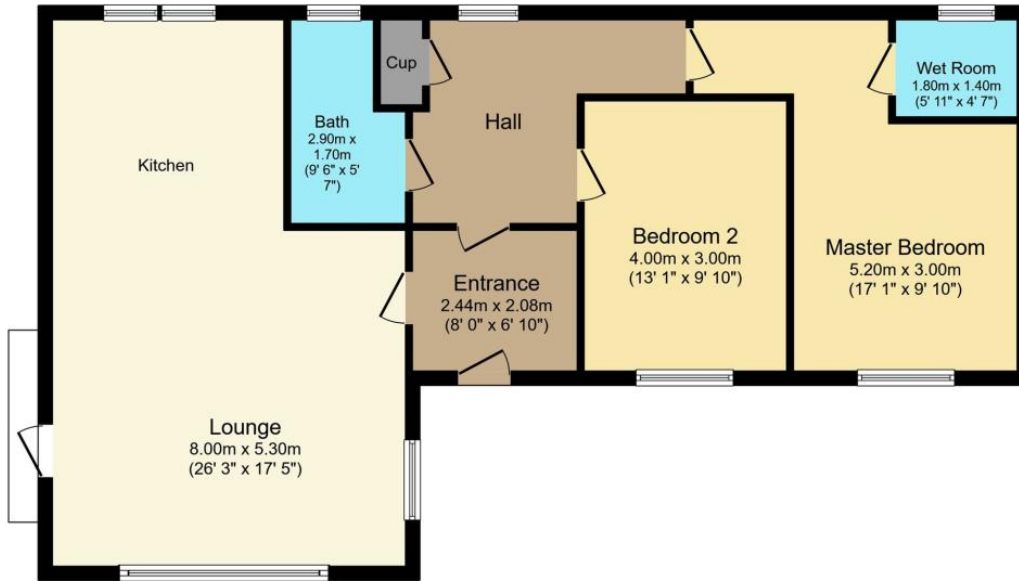
The bungalow offers modern open plan living with a dual aspect to the living area overlooking the garden, modern kitchen with a good range of floor and wall units, built in oven and hob.

Modern bathroom with wet room shower.

Garden, blocked paved driveway offering off street parking.



## Floorplans



Total floor area 89.3 sq.m. (961 sq.ft.) approx.  
 This plan is for illustration purposes only and may not be representative of the property. Plan not to scale.

Powered by audioagent.com

## Energy Efficiency

Energy Efficiency Rating			
Score	Energy rating	Current	Potential
92+	A		
81-91	B		87   B
69-80	C		
55-68	D	62   D	
39-54	E		
21-38	F		
1-20	G		