

3 Bedroom Semi-Detached for Sale - Offers Over £169,950

Albatross Way, Ashington, NE63 9WW



KEY FEATURES

- MOVE IN READY • SEMI-DETACHED HOME • BEAUTIFULLY LANDSCAPED GARDEN • SINGLE GARAGE • POPULAR AREA CLOSE TO HOSPITAL • HOMEBUILDER WARRANTY REMAINING • BUILT IN WARDROBES • TASTEFUL DECOR THROUGHOUT

Description

Clarke Holland Select are pleased to offer to market this spotless, move in ready, 3 bed semi-detached property in the popular area of Windmill Park, Ashington.

With a mature, beautifully landscaped garden and impeccable decoration, there'll be little to do apart from move in with this spacious Gleeson home.

The highlight of the lower floor is the spacious kitchen diner at the front of the property, leading to a spacious living space opening out to the garden via french doors, flooding the whole room with light.

Upstairs you will find three good sized bedrooms, all fitted sliding door wardrobes; as well as a modern family bathroom.

For peace of mind the property also comes with around 8 years remaining on its NHBC warranty. As well as Central Heating and a wired in smoke detection system.

We expect this property to be extremely popular with families and couples alike looking to find their forever home. Get in touch with ClarkeHolland.com today to book a viewing.

Location

Windmill Park is an exclusive development situated at the beginning of the Northumberland coastal route. The town has a comprehensive range of shops in a pedestrianised shopping centre. There are lots of leisure services and two country parks.

Ashington is near to main transport links via rail, air and road making it the ideal base for a family home. The development is only 5 miles from Morpeth town centre offering resources within easy reach and the buzzing and vibrant City of Newcastle is only approximately 16 miles away.

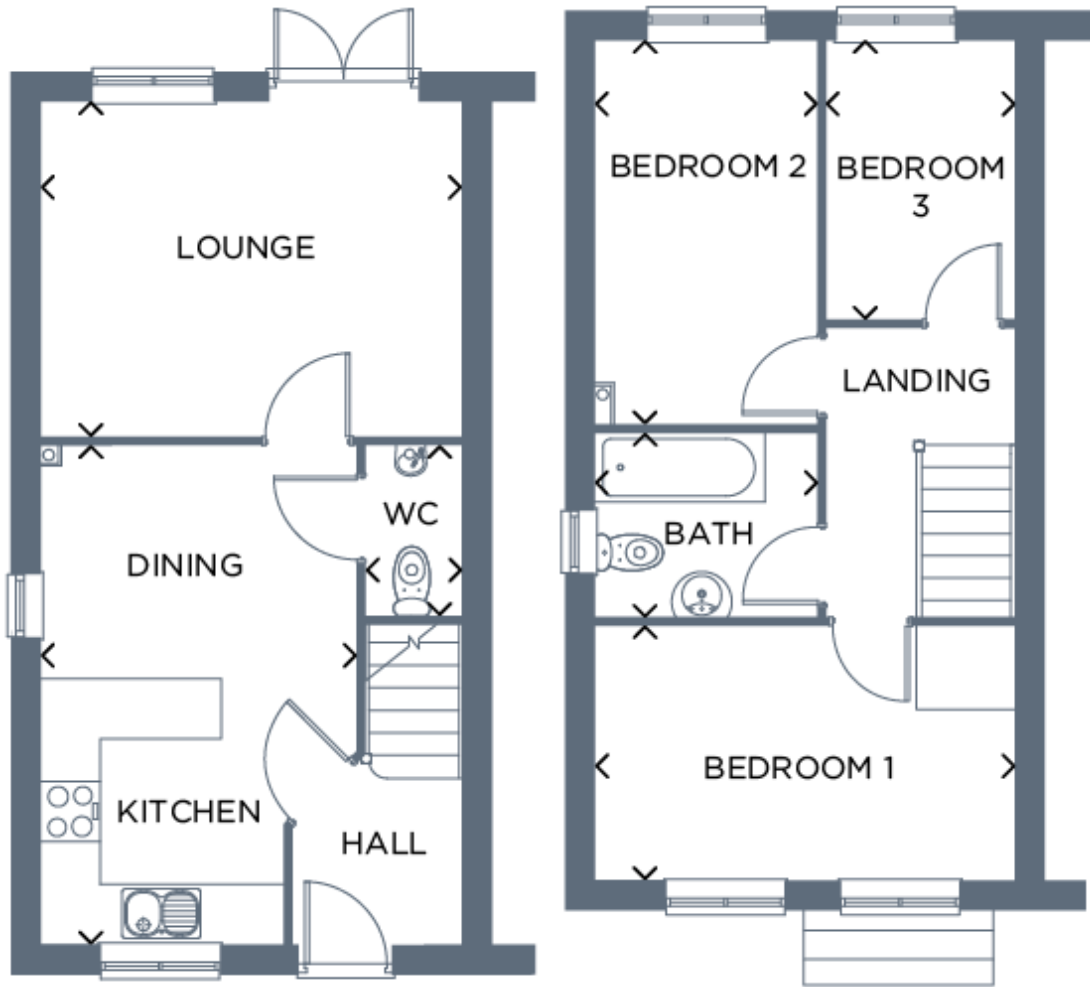
Ashington has a wide range of shops for all of your needs, for grocery shopping there is the Co-operative, Iceland and Asda all within easy access. For general shopping a few shops include Wilkinson, Dorothy Perkins and Burton.

Ashington has a range of leisure facilities for all ages, there is Newbiggin Golf Club, Springdawn Riding School and Woodhorn Colliery Museum. For sport facilities the town has a gym, New Force Gym, a fitness centre Dynamix Fitness Centre, a health club, Oasis Health Club and Tempos Health Studio.

Ashington has a range of education for all ages. For nurseries and playgroups the town has Acorns, Rascals and Bedlington Bears Nursery. For older children all within easy reach the town has a range of schools, some include Ashington Alexandra Middle School, St Benedict's Roman Catholic Middle School, Seaton Hirst Community Middle School, Ashington Hirst Park Middle School and Hirst High School. For older pupils there is Northumberland College.







Energy Efficiency

Energy Efficiency Rating			
Score	Energy rating	Current	Potential
92+	A		96 A
81-91	B	83 B	
69-80	C		
55-68	D		
39-54	E		
21-38	F		
1-20	G		